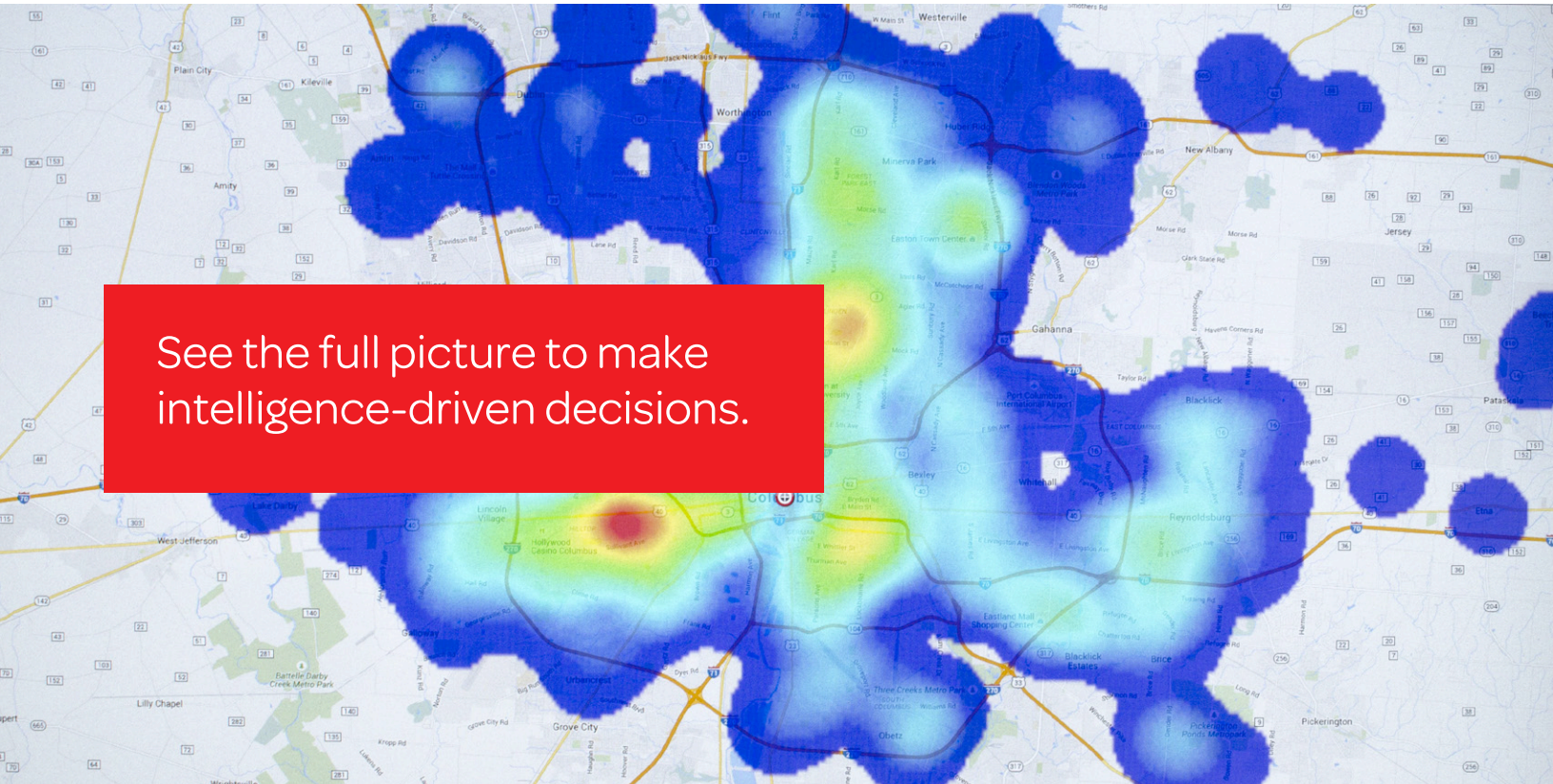


Accurint® Crime Analysis

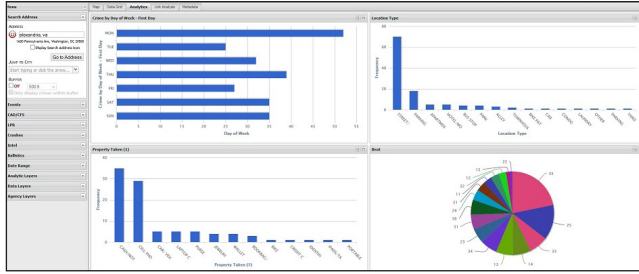
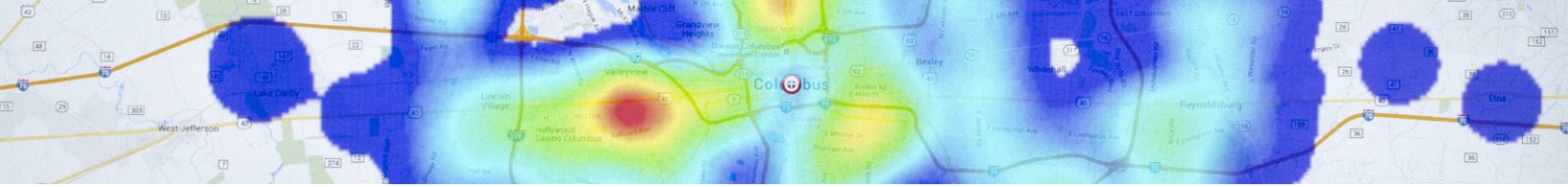


Law enforcement needs the ability to quickly view actionable intelligence on local, regional and national events. The ability to connect and analyze data from disparate law enforcement systems in a user friendly system is critical. Using strong technology, robust analytics, crime mapping, and visual tools, law enforcement is better equipped to make informed deployment decisions when dealing with regional series, patterns and trends.

Accurint Crime Analysis is a secure online dashboard that enables crime data sharing, pattern analysis, crime mapping, predictive analytics and reporting for law enforcement. Users can view, analyze and download crime and call data from agencies in their region or even agencies across the nation. Crime data is automatically extracted and cleaned from disparate data sources to improve data quality standards and promote multi-agency collaboration. It also provides law enforcement with dashboard analytics, mapping and reports to help analysts, investigators and decision makers.

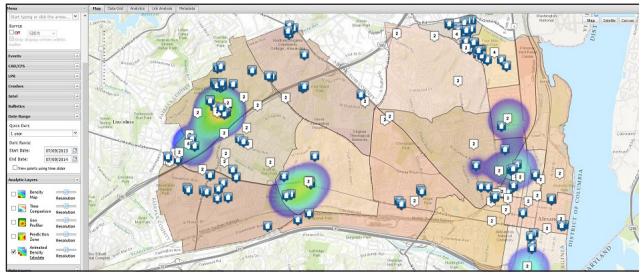
“Our police department recently implemented Accurint Crime Analysis, Accurint Crime Analysis Workstation and Community Crime Map in an effort to analyze our crime and CFS data in a more timely and effective manner. The folks are always quick to offer wonderful support and have great training and webinars!”

— Law Enforcement Executive



Accurint Crime Analysis benefits for analysts & officers:

- Includes 140 fields of data with narratives accessible anywhere
- View crime and calls for service trends across borders
- Create, schedule and disseminate reports to other users
- Conduct geographic analysis to narrow suspect list



Accurint Crime Analysis benefits for executives:

- Predict where crime and calls for service will occur
- Compare and animate crime and calls for service hotspots over time
- Create and automate COMPSTAT and ad-hoc reports
- View over 100 graphs and charts using dashboard analytics

Accurint Crime Analysis combines data from disparate data sources into a seamless, standardized data set that makes it easy to view, analyze and share data between departments. It is updated through an automated data feed that works with any CAD or RMS. The extracted data is saved locally within the agency, then the data is pushed into the Accurint Crime Analysis system. The solution is never directly connected to a law enforcement data system.

Accurint Crime Analysis creates meaningful graphs to help law enforcement visualize crime patterns and trends across jurisdictional lines. With over 200 analytical features, Accurint Crime Analysis gives users the ability to analyze nearly every aspect of an agency's data. Crime hotspot maps and custom predictive analytics can be created with one click against any data on the map, even data spanning multiple jurisdictions.

The advanced analytical capabilities show how crime or calls for service have changed over time and across an area. It allows agencies to discover temporal trends within any set of data. Accurint Crime Analysis can also be used to predict future hot areas to deploy resources to where crime will happen. These predictive components place resources in the right place at the right time.

For more information:

Call 866.242.1440 or visit www.lexisnexis.com/risk

About LexisNexis® Risk Solutions

LexisNexis Risk Solutions (www.lexisnexis.com/risk) is a leader in providing essential information that helps customers across all industries and government predict, assess and manage risk. Combining cutting-edge technology, unique data and advanced scoring analytics, we provide products and services that address evolving client needs in the risk sector while upholding the highest standards of security and privacy. LexisNexis Risk Solutions is part of Reed Elsevier, a leading publisher and information provider that serves customers in more than 100 countries with more than 30,000 employees worldwide. Our government solutions assist law enforcement and government agencies with deriving insight from complex data sets, improving operational efficiencies, making timely and informed decisions to enhance investigations, increasing program integrity and discovering and recovering revenue.



The LexisNexis Accurint Crime Analysis services are not provided by "consumer reporting agencies," as that term is defined in the Fair Credit Reporting Act (15 U.S.C. §1681, et seq.) ("FCRA") and do not constitute "consumer reports," as that term is defined in the FCRA. Accordingly, Accurint Crime Analysis service may not be used in whole or in part as a factor in determining eligibility for credit, insurance, employment or another purpose in connection with which a consumer report may be used under the FCRA. Due to the nature of the origin of public record information, the data sources used in reports may contain errors. Source data is sometimes reported or entered inaccurately, processed poorly or incorrectly, and is generally not free from defect. This product or service aggregates and reports data, as provided by the public records and commercially available data sources, and is not the source of the data, nor is it a comprehensive compilation of the data. Before relying on any data, it should be independently verified. LexisNexis and the Knowledge Burst Logo logo are registered trademarks of Reed Elsevier Properties Inc., used under license. Other products and services may be trademarks or registered trademarks of their respective companies. Copyright © 2016 LexisNexis. All rights reserved. NXR11335-00-0316-EN-US