

THE POWER OF ONE

A complete DMV suite empowering
your service, your mission, and the lives you touch

IDENTITY ASSURANCE. PAYMENTS. VITAL RECORDS. DATA MANAGEMENT.

Driving Trust in Every Transaction

Empowering DMVs to Lead the Future of Citizen Service

State DMVs sit at the crossroads of identity, payments, and public trust. Every interaction—whether issuing a license, processing a payment, or updating a vital record—is a **moment that matters**.

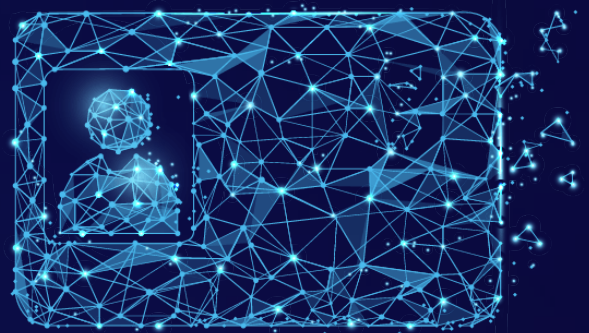
**Citizens expect speed. Governments demand security.
And every touchpoint must deliver both.**



LexisNexis® Risk Solutions is Your Partner in Transformation

We help DMVs modernize with confidence—confirming identities instantly, streamlining payment acceptance, digitizing vital records, and ensuring your data is:

-  Precise
-  Secure
-  AI-Ready



Built for Trust. Designed for Agility.

Our proven, secure solution suite empowers agencies to meet today's demands and prepare for tomorrow's innovations—**without compromising compliance, security, or citizen experience.**



Let's reimagine what's possible—so you can focus on what matters most:
delivering fast, frictionless, citizen-first service.

LexisNexis® EssentialID™:

Confidence from Onboarding to Every Touchpoint

Identity isn't a one-time check—it's a **continuous promise of trust**. Every time a citizen engages with your agency, you need confidence that you're interacting with right person. LexisNexis® EssentialID™ delivers intelligent, real-time identity verification and authentication that adapts to every moment.


KEY CAPABILITIES



EssentialID™ offers intelligent orchestration with low-code integration, enabling seamless deployment across systems. It provides industry-leading, real-time verification and authentication, ensuring every interaction is secure. **The result is frictionless service that prevents fraud and maintains compliance—without slowing down your operations.**

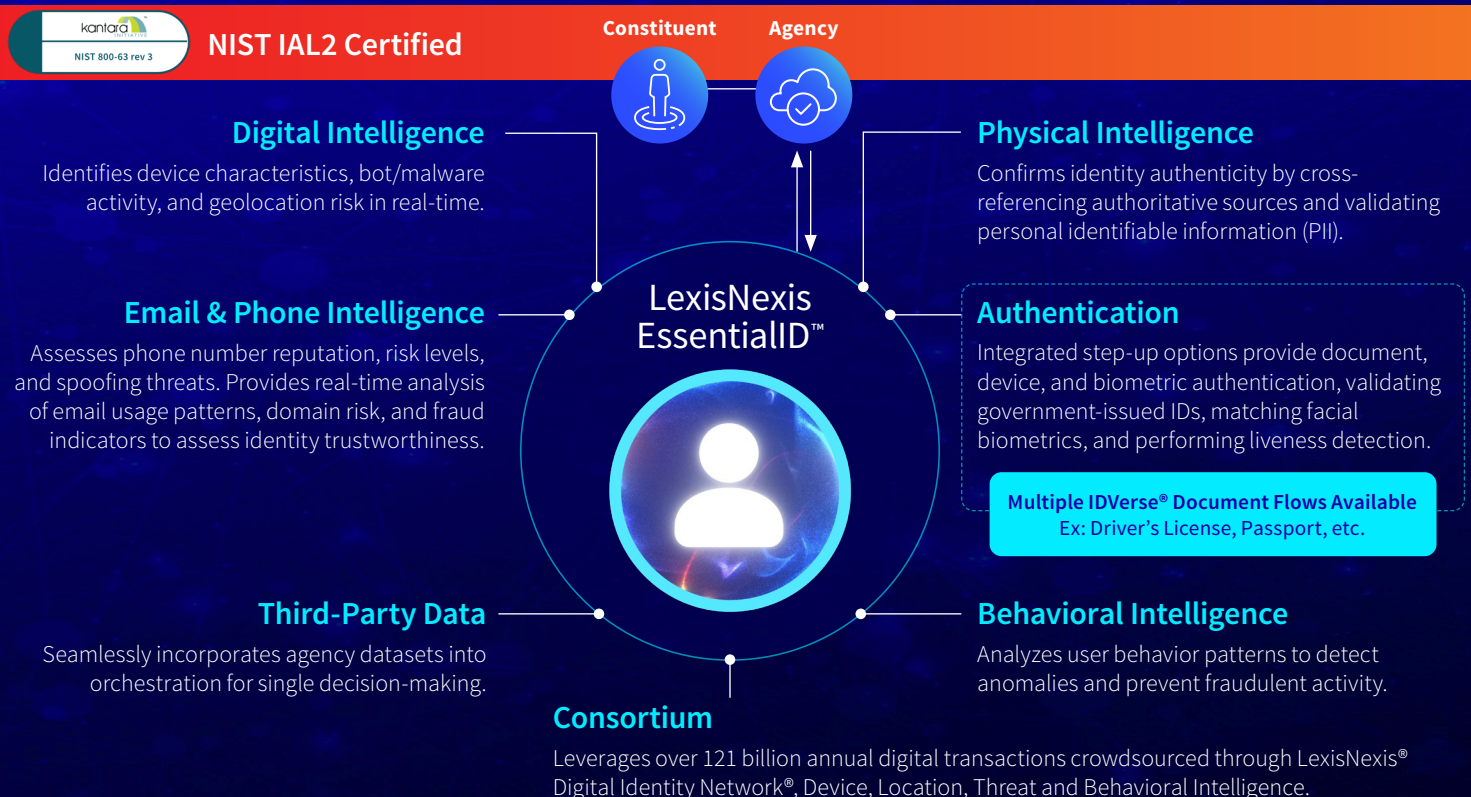
BENEFITS FOR DMVS



-  Accelerate citizen access while maintaining high levels of security
 -  Reduce operational burden and lower costs
 -  Stay ahead of emerging threats and shifting regulatory demands
- With EssentialID™, DMVs can deliver trusted, efficient service—every time, for every citizen.

Delivered Via One Orchestration Platform

Built with Privacy, Flexibility, and Scalability in Mind



LexisNexis® Payment Solutions: Built for DMV Efficiency, Trusted by Citizens

In a world where speed and security define public service, payment processing shouldn't slow you down. LexisNexis® Payment Solutions empower DMVs to accept and reconcile all payment types—**securely, seamlessly, and around the clock.**

Less Complexity. More Control. Total Confidence.



With LexisNexis® Payment Solutions, DMVs can focus on delivering fast, secure, citizen-first service—**while we take care of the rest.**

WHY AGENCIES CHOOSE US



We don't just process payments—we simplify the entire experience:



One point of reconciliation across all locations



No resident card data stored on your network



Same-day settlement with automated notifications



Chargebacks, disputes, and merchant IDs fully managed by our team



PCI Level 1 compliance and NACHA requirements met



Registered Payment Facilitator (PayFac) with the card networks

LexisNexis® Risk Solutions: The Foundation for AI-Ready, Citizen-First Service

Modernization starts with data. Without proactive management, DMV databases can become outdated in less than five years—undermining service delivery, security, and innovation. **LexisNexis® Risk Solutions helps agencies take control of their data, ensuring it's accurate, governed, and ready for what's next.**

WHAT WE DELIVER



Our solutions include batch processing, continuous monitoring, and Master Person Index capabilities to maintain data integrity. A dedicated Special Investigations Unit provides expert insights to support compliance and fraud detection. With proven tools to elevate data quality, **we help DMVs stay ahead of regulatory demands and operational risks.**

AI DEPLOYMENT STARTS HERE



High-quality, governed data unlocks the full potential of AI:



Automated workflows that improve efficiency and service



Scalable AI adoption with built-in security and compliance



Confidence to expand innovative, citizen-first offerings

LexisNexis® VitalChek®: Trusted by Agencies, Built for DMVs

Vital records are the foundation of identity—and DMVs are on the front lines of verifying them. LexisNexis® VitalChek® partners with over 500 agencies across 52 of 57 U.S. vital records jurisdictions, delivering a fully modernized experience that's secure, efficient, and citizen-friendly.



SOLUTIONS TAILORED FOR DMVS



We help streamline every step of the process



Real-time verification to support REAL ID compliance



Paperless applications, integrated payment processing, and identity verification



Lobby kiosks and call center support to improve customer flow



Same-day settlements with guaranteed payment



Secure infrastructure that meets PCI-DSS Level 1 and FedRAMP standards



Digital mailroom services and onsite staffing options

From paper to digital, from complexity to clarity—**VitalChek® helps DMVs deliver trusted service with speed and confidence.**

Accelerate REAL ID with Digital Birth Credentials

- Real-time verification & manual process reduction
- Strong identity assurance with NIST IAL2 compliance
- Future-proofing for nationwide acceptance
- Standards: OpenID4VCI mDoc, ISO/IEC 18013-5 & 7



With LexisNexis® Risk Solutions, DMVs can turn data into a strategic asset—fueling smarter decisions and future-ready service.

Let's Connect

Empower your agency to deliver secure, modern, citizen-focused services—from identity to payments to data.

Contact your LexisNexis Risk Solutions Representative
risk.lexisnexis.com/government



The LexisNexis EssentialID, LexisNexis VitalChek, IdVerse, and Digital Identity Network services are not provided by "consumer reporting agencies," as that term is defined in the Fair Credit Reporting Act (15 U.S.C. § 1681, et seq.) ("FCRA") and do not constitute "consumer reports," as that term is defined in the FCRA. Accordingly, the LexisNexis EssentialID, LexisNexis VitalChek, IdVerse, and Digital Identity Network services may not be used in whole or in part as a factor in determining eligibility for credit, insurance, employment or another purpose in connection with which a consumer report may be used under the FCRA. Due to the nature of the origin of public record information, the public records and commercially available data sources used in reports may contain errors. Source data is sometimes reported or entered inaccurately, processed poorly or incorrectly, and is generally not free from defect. These products or services aggregate and report data, as provided by the public records and commercially available data sources, and are not the source of the data, nor are they a comprehensive compilation of the data. Before relying on any data, it should be independently verified.

LexisNexis and the Knowledge Burst logo are registered trademarks of RELX Inc. VitalChek is a registered trademark of LexisNexis Risk Solutions Inc. IDVerse is a registered trademark of OCR Labs Global Limited. Digital Identity Network is a registered trademark of ThreatMetrix Inc. LexisNexis EssentialID is a trademark of LexisNexis Risk Solutions Inc. Other products may be registered trademarks or trademarks of their respective companies. © 2025 LexisNexis Risk Solutions. NXR17027-00-0825-EN-US