

Reduce Hours Comparing Call Detail Records to Crime Locations with ONE Click

Accurint® Device Time/Location Correlation Feature

Law enforcement agencies are currently expected to deliver the same level of service to protect and serve their communities with fewer available resources. Criminal investigations often require hours of dedicated time to successfully resolve and prosecute. For more complex investigations involving device geolocation, reducing the time required for data analysis is invaluable.

The Accurint® Device Time/Location Correlation Feature is now available to users of Accurint® Virtual Crime Center and Accurint® TraX™. This feature allows users to seamlessly combine and compare call detail and device records with contributory law enforcement data with **one** click.

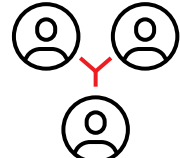
The Power of Accurint®



Location/date information found in subject's **call detail** or **device records**



Contributory law enforcement data occurring at the same time and location

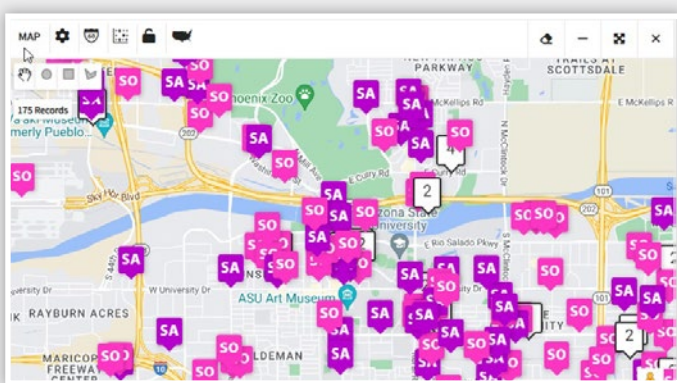





Overlap to show connection between a subject and potential crimes, events, and locations

USE CASE:

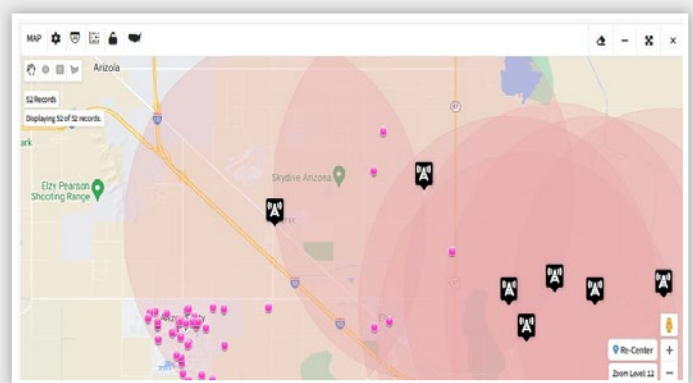
A person of interest has been identified in multiple indecent exposure cases during a four-month period and is believed to be involved in additional events.




BEFORE Device Time/Location Correlation



-  **Multiple searches needed** to identify indecent exposure incidents that occurred in your jurisdiction during this four-month period
-  **Hours are spent manually comparing** crimes that occurred in areas the person of interest is known to have been located in based on legally obtained call detail record data
-  **Two Hundred plus potential cases identified** for closer examination, taking hours to narrow down to just twenty-five additional cases

AFTER Device Time/Location Correlation



-  **One single search**, initiated using the call detail records processed by Accurint TraX, **automatically visualizes** the person of interest's known location(s) in Accurint Virtual Crime Center
-  **Fifty potential cases are identified** as occurring in an area that overlapped with the person of interest's known location
-  **Hours of time are saved** reviewing the cases to identify the twenty-five additional cases

Save Time | Identify Non-Obvious Connections | Solve More Cases

To learn more about The Power of Accurint®, visit: risk.lexisnexis.com/le